

Case Study – Sprayed Concrete, Power Station

Project

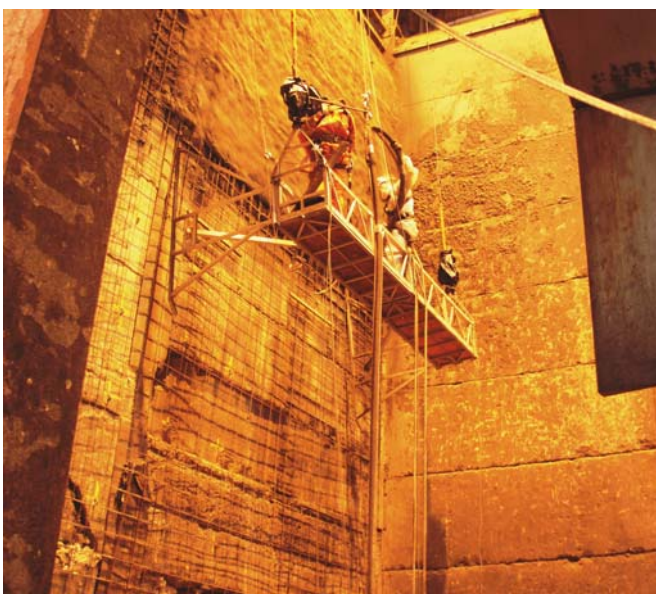
- Essential repairs to the internal wall of a concrete silo in the energy-from-waste plant at Jersey power station, that was suffering from the long term impact of loading buckets.

Client Requirements

- To stabilise the wall and protect delicate electrical equipment and pipework on the external face of the silo.
- To work 24 hour shifts around other contractors during a 4-day closure of the power station and return the wall into service immediately upon completion of works.

CAN Solution

- CAN was able to overcome the restricted space, difficult access and inhospitable conditions by using specialist rope access techniques to complete the work, without needing to empty the silo completely of waste.
- After drilling approximately 130 holes in the reinforced concrete blocks, polyester resin was used to fix cranked steel dowels in a close array.
- Weldmesh sheets were then winched into place inside the structure and attached to the dowels.



- A bespoke work platform was designed and built by CAN to enable operatives to apply dry sprayed concrete in a controlled and safe manner. This platform was suspended from steelwork in the roof of the building.
- The sprayed concrete was reinforced with polypropylene fibres and contained an accelerator additive to ensure the maximum possible protection was provided as soon as possible.
- Careful coordination with other contractors within the structure enabled CAN to finish the concrete spraying ahead of schedule.